

## CBdesigner v2.0.0 User Guide

Released: 2 March 2015

Created by: Jay Sanchez

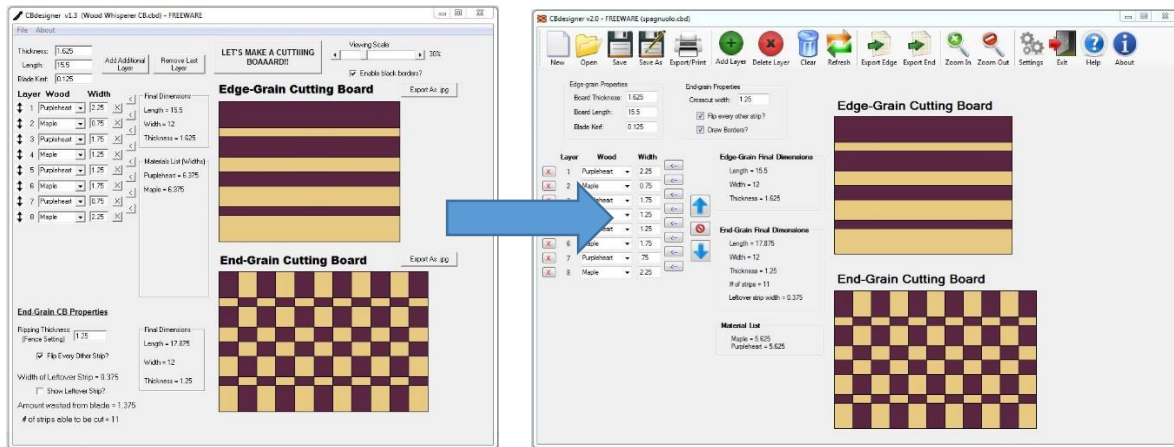
CBdesigner is 100% free. Unlimited distribution.

## Table of Contents

1	Introduction .....	2
2	Requirements.....	2
3	Main Window.....	3
3.1	Toolbar .....	3
3.2	Edge-Grain Settings.....	4
3.3	End-Grain Settings .....	4
3.4	Layer List .....	4
3.5	Move Layers Up/Down .....	4
3.6	Final Dimensions .....	5
3.7	Cutting Boards.....	5
3.8	Material List .....	5
4	Settings Window .....	5
4.1	Default Layer Settings .....	5
4.2	Print Settings.....	6
4.3	Wood Library Commands .....	6
4.4	Wood Library.....	6
4.5	Save and Exit. ....	6
5	Acknowledgements.....	6

# 1 Introduction

CBdesigner is a program that I designed in order for woodworkers to visualize and design edge-grain and end-grain cutting boards. Version 1.0 was launched back on 8 November 2008 and the last update (v1.3) was released on 22 December 2008. The old version was written in the antiquated and no longer supported Visual Basic 6 which was very limited and had many issues in modern Windows. Version 2.0 is now written in Visual Basic 2010 Express. Since it is now written in a language supported in the Microsoft .NET Framework, it is fully compatible with all versions of Windows. I was originally inspired by The Wood Whisperer's original cutting board video to explore new designs, and thus created a program to do so. I have received lots of feedback and support from the woodworking community and finally got around to making a new version that everyone should find even more useful than before.

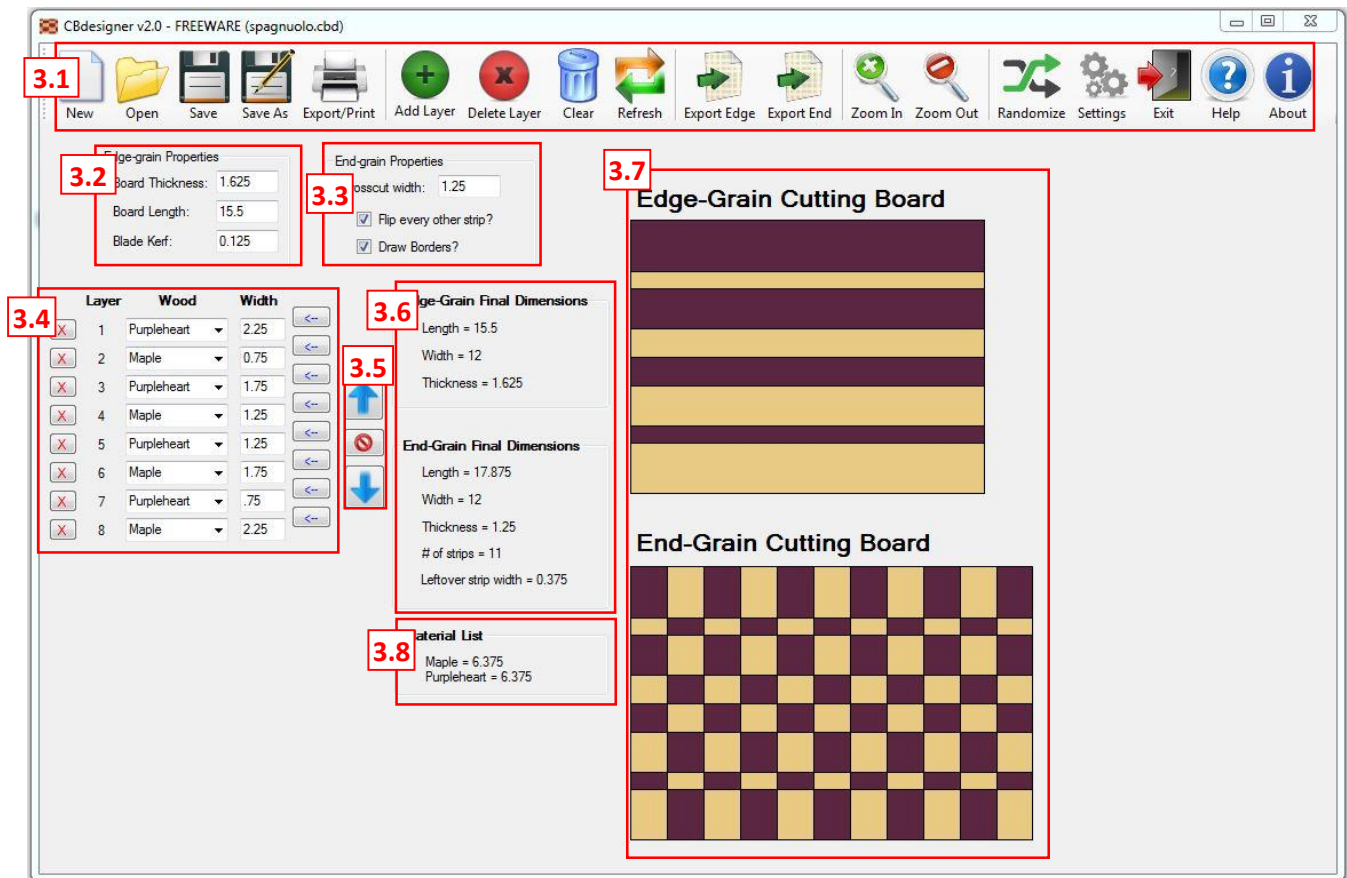


## 2 Requirements

CBdesigner v2.0 exists as a standalone executable file that does not need to be installed; however, it does need the following in order to run successfully:

- **Windows (XP, Vista, 7, 8).** Unfortunately since CBdesigner was programmed in Visual Basic 2010 Express, it does not work on Mac systems unless you have a dual boot system like Boot Camp or a Windows emulator.
- **Microsoft Framework 4.5 or greater.** Most users should already have this installed on their Windows system, but if not, it is a very easy download from the Microsoft website. Just google "Microsoft .NET Framework"
- **iTextSharp .NET PDF Library.** (Specifically: itextsharp.dll, itextsharp.pdfa.dll, itextsharp.xtra.dll). These required DLLs come with the original zip file, so just be sure to extract it along with the CBdesigner executable.
- **Adobe Reader.** This is required because CBdesigner exports the design to a pdf document, which the user can print at any time.

### 3 Main Window



#### 3.1 Toolbar

- **New.** This will create a new (blank) cutting board
- **Open.** This allows the user to select a previously saved cutting board file. The wood library is also saved at the same time. Note that \*.cbd files are considered valid CBdesigner files. Cbd files created with version 1.3 are not compatible of CBdesigner 2.0+
- **Save.** This overwrites the currently open cutting board file with the current one.
- **Save As.** This allows the user to save the cutting board design and wood library to a different file.
- **Export/Print.** This exports the cutting design to a .pdf file that can be treated like any other pdf file. After the user selects a file name, the pdf will automatically be opened for review. The program will warn the user if the selected pdf is already in use. Note that the user cannot directly print from CBdesigner. A pdf document is made which the user can print at any time.
- **Add Layer.** This will add a layer to the end of the current design using the default selections under the Settings menu.
- **Delete Layer.** This will delete the layer at the end of the current design.
- **Clear.** This will delete all layers.

- **Refresh.** Although the design should automatically update with any changes, this button allows the user to manually refresh the design if it has not already done so. The user can also refresh by hitting enter in any of the textboxes.
- **Export Edge.** This exports the current edge-grain cutting board to a .png picture file.
- **Export End.** This exports the current end-grain cutting board to a .png picture file.
- **Zoom In.** This enlarges the cutting board.
- **Zoom Out.** This decreases the size of the cutting board up to a certain point.
- **Randomize.** This will randomize the order of the layers.
- **Settings.** This will be explained in Section 3.
- **Exit.** This exits the program
- **Help.** This opens the “User Guide.pdf” contained in the main CBdesigner folder.
- **About.** This will open a window that gives more information on the current version of CBdesigner.

### 3.2 Edge-Grain Settings

- **Board Thickness.** The thickness of the boards.
- **Board Length.** The length of the boards. Be sure to account for losses when squaring up the final boards.
- **Blade Kerf.** The thickness of the blade.

### 3.3 End-Grain Settings

- **Crosscut Width.** How wide the strips are cut from the edge-grain board. This is also ends up being the thickness of the end-grain board.
- **Flip every other strip?** This will flip every other strip in the end-grain board when checked.
- **Draw Borders?** This toggles the black borders in the cutting boards.

### 3.4 Layer List

- **Delete button [X].** This button will delete the layer right next to it.
- **Layer.** This is the layer number. The user can click a layer number in order to move it up or down as shown in Section 2.5
- **Wood.** This is the wood name selected by the user. The combo box is populated by the wood library created by the user under Settings. It is automatically updated when the wood library is updated and saved.
- **Width.** The width of the strip.
- **Insert Layer [←].** This button inserts a layer in between the two surrounding layers.

### 3.5 Move Layers Up/Down

The user can move any layer up or down in the design by clicking the desired layer number. A black box will be shown indicating the selection.

- **Up Arrow.** Moves the selected layer up.
- **Cancel button.** Cancels the layer selection and removes the black box on the layer number.
- **Down Arrow.** Moves the selected layer down.

### 3.6 Final Dimensions

The final length, width, and thickness are shown here assuming perfect cuts and glue-ups. The number of strips able to be cut for the end-grain board is shown along with the amount of total waste due to the blade kerf.

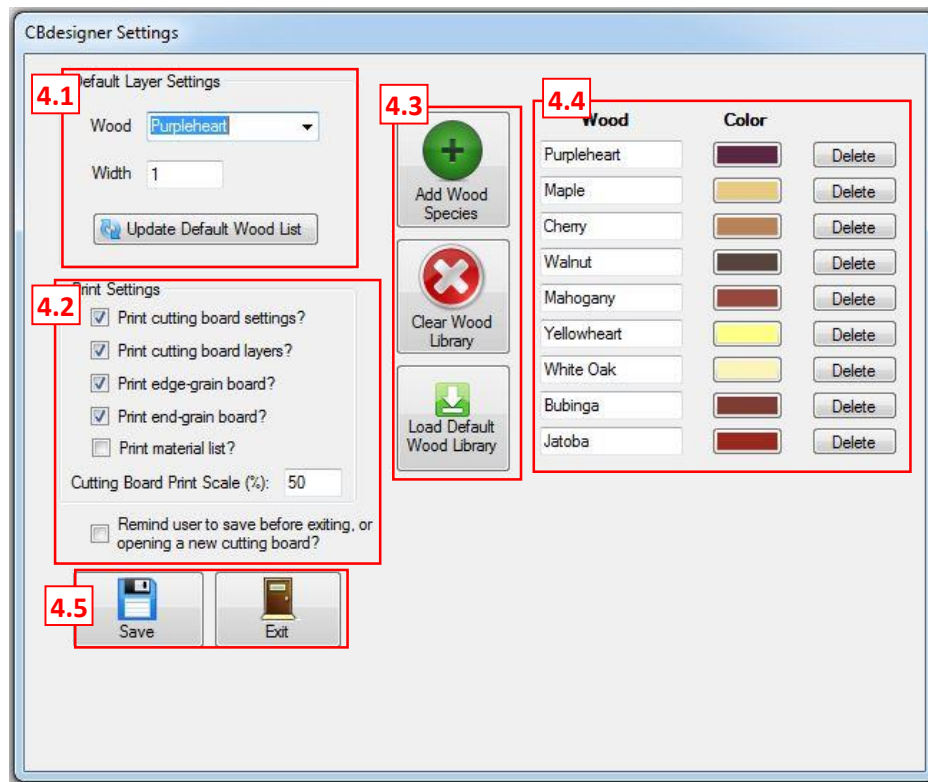
### 3.7 Cutting Boards

The final display for the cutting boards are shown here.

### 3.8 Material List

This box contains a material list for all the wood species used in the design. Each number represents the total amount of wood needed, taking into account the amount lost due to the blade during each ripping cut.

## 4 Settings Window



#### 4.1 Default Layer Settings

This menu allows the user to select the default wood and width that will appear when a layer is added to the cutting board design.

- **Wood.** Wood species selection.
- **Width.** Width selection.
- **Update Default Wood List.** The wood list in the default wood should already update to match the custom wood library, but the user can manually update it by clicking this button.

## 4.2 Print Settings

This menu allows the user to pick and choose what will show up in the printout when the user decides to export the design to a pdf.

- **Print cutting board settings?** Prints three tables concerning the cutting board settings
- **Print cutting board layers?** Prints a table with the each layer.
- **Print edge-grain board?** Prints the edge-grain board.
- **Print end-grain board?** Prints the end-grain board.
- **Print material list?** Prints a table with the material list.
- **Cutting Board Print Scale (%).** This determines how large the board will pages across the width of the page.
- **Remind user to save before exiting, or opening a new cutting board?** Sometimes it gets really annoying to be warned when a design is not saved, so this toggles this warning box to show up or not.

## 4.3 Wood Library Commands

- **Add Wood Species.** Adds a wood species.
- **Clear Wood Library.** Deletes all listed wood species.
- **Load Default Wood Library.** Loads a default set of woods and colors so the user does not have to figure out colors when starting off.

## 4.4 Wood Library

- **Wood.** Name of the wood species.
- **Color.** Color of the wood species.
- **Delete button.** Deletes the corresponding wood species.

## 4.5 Save and Exit.

- **Save.** Saves the current default settings and wood library. A notification will briefly appear if the settings were saved successfully.
- **Exit.** Exit the Settings Window. The program will not warn the user if the settings are not saved beforehand.

# 5 Acknowledgements

Thank you to the woodworking community for the appreciation and feedback that I have received ever since I released the early versions of CBdesigner.

Thank you to The Wood Whisperer, who's original cutting board video inspired me to get into woodworking and ultimately create the original version of CBdesigner.

And a special thanks to Brad for his generosity in designing the website and hosting CBdesigner over the past many years.